

# Vulcan Sub-basin

## Comprehensive Core Data Set



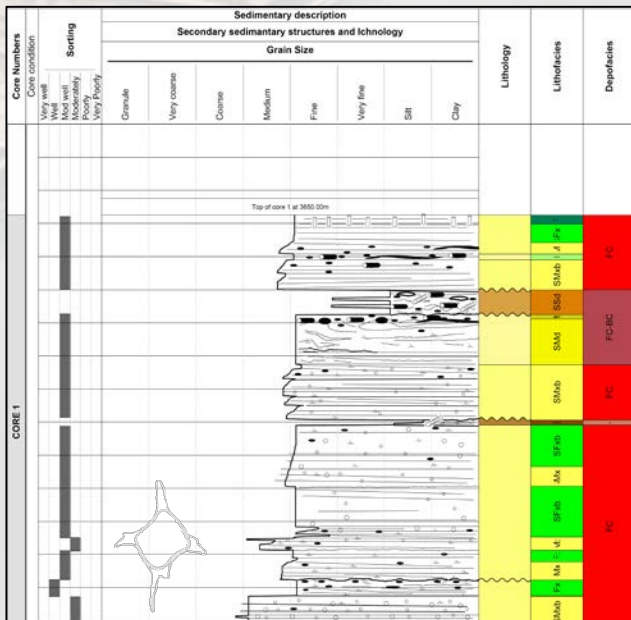
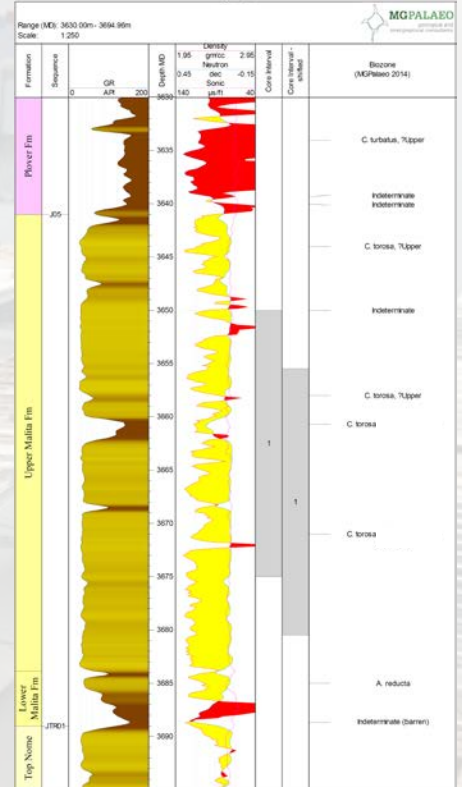
MGPalaeo is about to complete a multi-client core study covering key stratigraphic intervals over the Vulcan Sub-basin. The comprehensive data set covers 1.6 kilometres of core from 63 wells spanning an area from Crux 1 in the South-West to Ludmilla 1 in the North-East.

All cored intervals were reviewed and photographed during which core condition, cored intervals and brief observations of the core were recorded. Existing palynological data over the cored intervals has also been reviewed and refined, and supplemented by analysis of new core samples.

Deliverables for this study include:

For all 63 cored wells:

- Overview chart highlighting the stratigraphic position of each cored interval (based on newly QC'd and updated biostrat from the MGPalaeo **AUSTRALIS** geological database)
- Recent overview core photography
- Tabulated core condition
- Very brief description of the cored intervals including depositional environments (where possible)



Core descriptions of 25 selected wells covering 770m of various parts of the stratigraphy:

- Approx. 270m at 1:70 scale
- Approx. 500m at 1:200 scale
- Digital grain size data (excel)
- Digital cm-scale export of lithofacies and depofacies (excel)
- RCA data (where present) plotted against lithofacies and depofacies (excel)
- Brief description of depositional environments
- Depositional models

For pricing or more information and examples of deliverables, please contact:

[amely.allgoewer@mgpalaeo.com.au](mailto:amely.allgoewer@mgpalaeo.com.au)



**MGPALAEO**  
geological and  
stratigraphical consultants

[amely.allgoewer@mgpalaeo.com.au](mailto:amely.allgoewer@mgpalaeo.com.au) or  
[info@mgpalaeo.com.au](mailto:info@mgpalaeo.com.au)  
(08) 9249 4628  
[www.mgpalaeo.com.au](http://www.mgpalaeo.com.au)